



2323 West Oxford
Englewood, CO 80110

www.SouthwestCP.com

SOUTHWEST CONCRETE PUMPING

Your Full-Service Pump Company



Metro Denver & Colorado Springs
Northern Colorado & Wyoming

303-781-7867
970-330-1290

TOLL FREE 888-781-7867

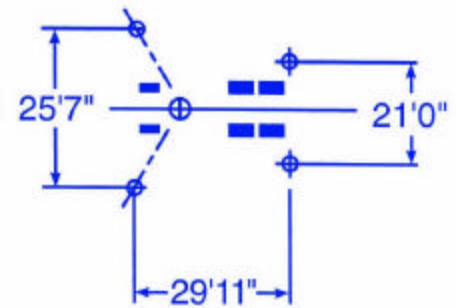
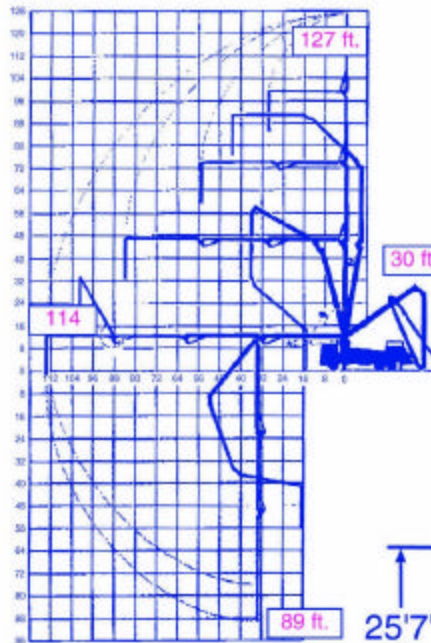
FAX 303-781-9446

KVM 39 Concrete Pump Truck Mounted Concrete Pump with 4-Section Placing Boom

The KVM 39 features one of the longest boom reaches on a three-axle truck with the 39-meter model. This well-balanced model with the benefit of the increased length is efficient and maneuverable.

Boom Specifications	U.S.	Metric
Pipeline Diameter	5"	125 mm
Vertical reach	127'	39 m
Reach From Slewing Axis	114'	35 m
Net Horizontal reach	105' - 2.5"	32 m
Unfolding Height	30' - 3"	9.2 m
Section Lengths:		
First Section	30' - 7"	9.3 m
Second Section	27' - 6"	8.4 m
Third Section	27' - 6"	8.4 m
Fourth Section	28' - 2"	8.6 m
Slewing Range	370 deg.	370 deg.
End hose Length	12' - 6"	3.8 m

Specifications are subject to change without prior notice.



OUTRIGGER SPREAD

Some of Southwest Concrete Pumping's Fleet:

