



# SOUTHWEST CONCRETE PUMPING

Your Full-Service Pump Company



2323 West Oxford  
Englewood, CO 80110

www.SouthwestCP.com

Metro Denver & Colorado Springs  
Northern Colorado & Wyoming

**TOLL FREE 888-781-7867**

303-781-7867  
970-330-1290

FAX 303-781-9446

## KVM 58 Concrete Pump Truck Mounted Concrete Pump with 4-Section Placing Boom

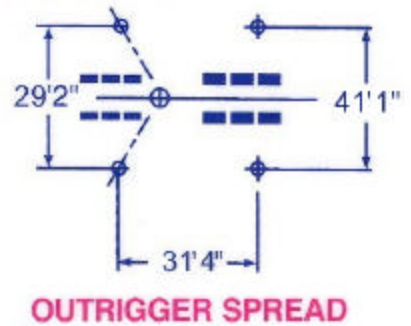
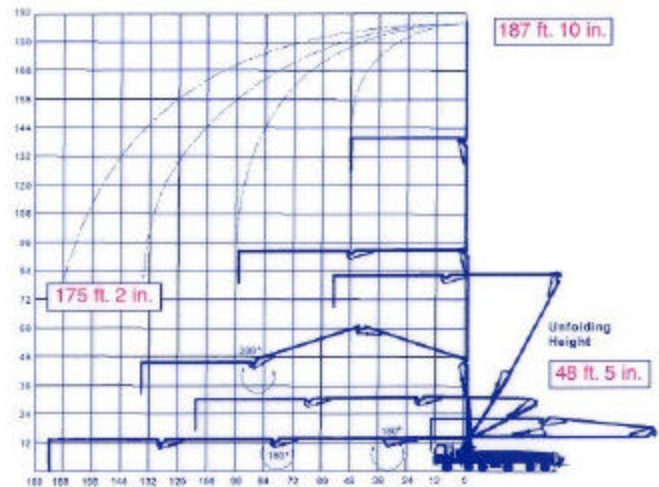
The KVM 58 is one of the longest and most advanced concrete pumps. With super X curved outriggers for stability and ease of set-up, it has a small outrigger footprint for its size. The KVM 58 has a vertical boom length of 187'-10".

Boom Specifications	U.S.	Metric
Pipeline Diameter	5"	125 mm
Vertical reach	187' - 10"	57.24 m
Reach From Slewing Axis	175' - 2"	53.4 m
Net Horizontal reach	159' - 6"	48.6 m

### Section Lengths:

First Section	33' - 1"	10.9 m
Second Section	47' - 3"	14.4 m
Third Section	47' - 3"	14.4 m
Fourth Section	47' - 7"	14.5 m
Slewing Range	370 deg.	370 deg.
End hose Length	10'	3 m

*Specifications are subject to change without prior notice.*



### Some of Southwest Concrete Pumping's Fleet:

