



2323 West Oxford
Englewood, CO 80110

www.SouthwestCP.com

SOUTHWEST CONCRETE PUMPING

Your Full-Service Pump Company



Metro Denver & Colorado Springs
Northern Colorado & Wyoming

303-781-7867
970-330-1290

TOLL FREE 888-781-7867

FAX 303-781-9446

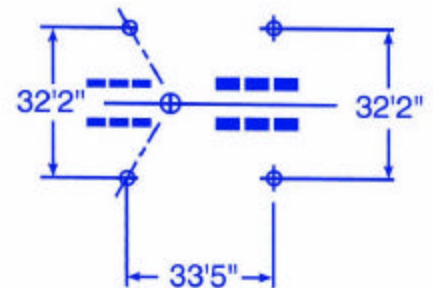
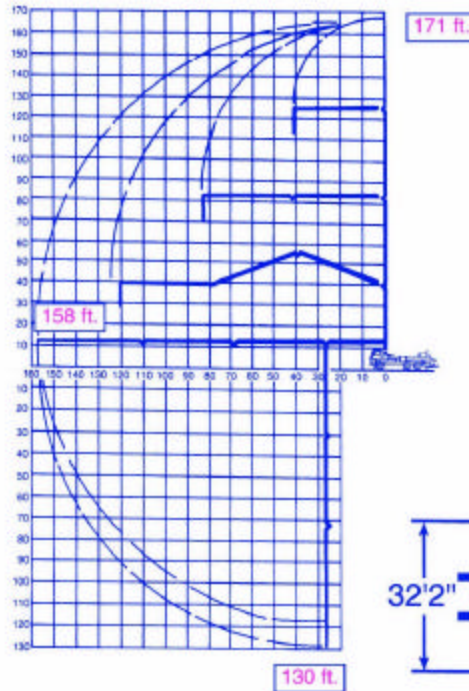
KVM 52 Concrete Pump Truck Mounted Concrete Pump with 4-Section Placing Boom

The KVM 52 has a horizontal reach of 145'-6" feet and a vertical reach of 170'-6" feet. This super pump has the versatility of single set-up and the extra long boom allows for efficient placement on highrise and flatwork.

Boom Specifications	U.S.	Metric
Pipeline Diameter	5"	125 mm
Vertical reach	170' - 6"	52 m
Reach From Slewing Axis	157' - 6"	48 m
Net Horizontal reach	145' - 6"	44.3 m
Unfolding Height	44' - 4"	

Section Lengths:	U.S.	Metric
First Section	29'-6"	8.9m
Second Section	42' - 8"	13 m
Third Section	42' - 8"	13 m
Fourth Section	42' - 8"	13 m
Slewing Range	370 deg.	370 deg.
End hose Length	10'	3 m

Specifications are subject to change without prior notice.



OUTRIGGER SPREAD

Some of Southwest Concrete Pumping's Fleet:

