



SOUTHWEST CONCRETE PUMPING

Your Full-Service Pump Company



2323 West Oxford
Englewood, CO 80110

www.SouthwestCP.com

Metro Denver & Colorado Springs
Northern Colorado & Wyoming

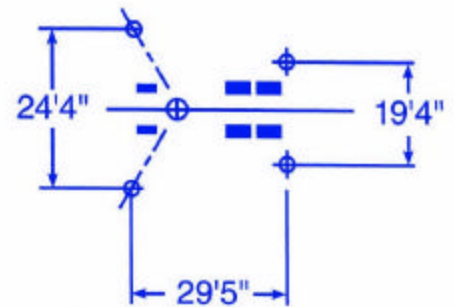
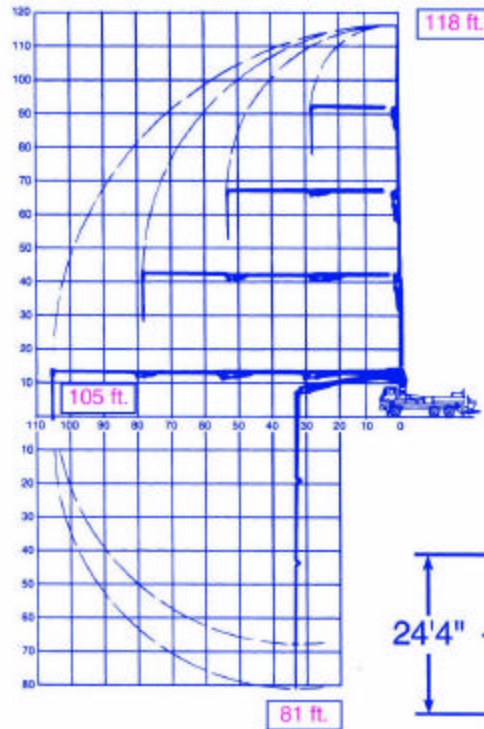
TOLL FREE 888-781-7867

303-781-7867
970-330-1290

FAX 303-781-9446

KVM 36 Concrete Pump Truck Mounted Concrete Pump with 4-Section Placing Boom

When you need a little more, this is the boom length that serves residential and commercial jobs with easy set-up, maneuverability and plenty of reach to get the job done. The KVM 34 will place concrete at over 110-feet vertically and 90-feet horizontally.



OUTRIGGER SPREAD

Some of Southwest Concrete Pumping's Fleet:

