



# SOUTHWEST CONCRETE PUMPING

Your Full-Service Pump Company



2323 West Oxford  
Englewood, CO 80110

www.SouthwestCP.com

Metro Denver & Colorado Springs  
Northern Colorado & Wyoming

TOLL FREE 888-781-7867

303-781-7867  
970-330-1290

FAX 303-781-9446

## KVM 34 Concrete Pump Truck Mounted Concrete Pump with 4-Section Placing Boom

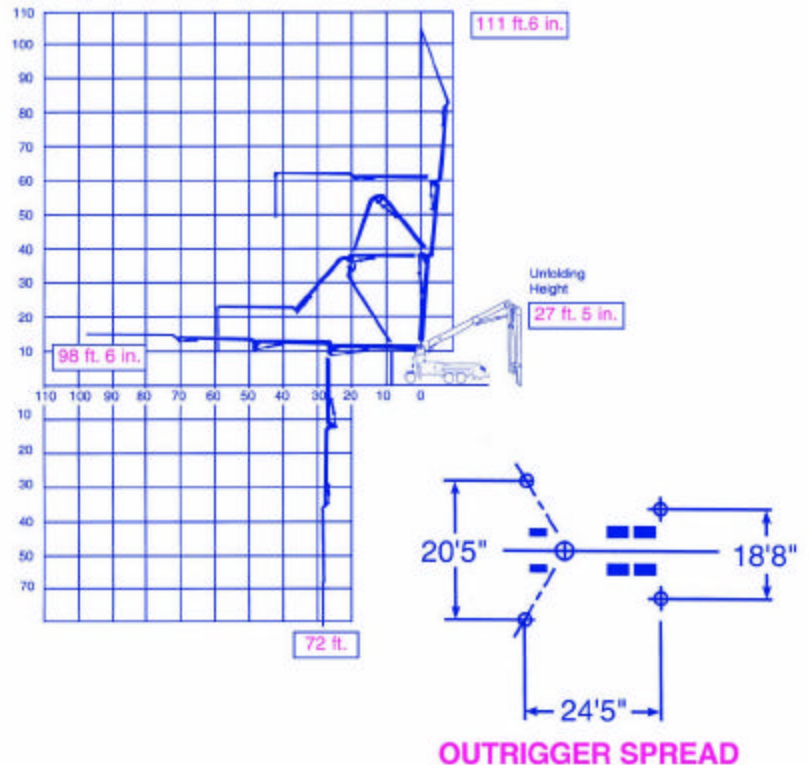
When you need a little more, this is the boom length that serves residential and commercial jobs with easy set-up, maneuverability and plenty of reach to get the job done. The KVM 34 will place concrete at over 110-feet vertically and 90-feet horizontally.

| Boom Specifications     | U.S.      | Metric |
|-------------------------|-----------|--------|
| Pipeline Diameter       | 5"        | 125 mm |
| Vertical reach          | 111' - 6" | 34 m   |
| Reach From Slewing Axis | 98' - 6"  | 30 m   |
| Net Horizontal reach    | 90'       | 27.5 m |
| Unfolding Height        | 27' - 5"  | 7.8 m  |

### Section Lengths:

|                 |          |          |
|-----------------|----------|----------|
| First Section   | 26' - 5" | 8.6 m    |
| Second Section  | 23' - 8" | 7.8 m    |
| Third Section   | 23' - 9" | 7.8 m    |
| Fourth Section  | 24' - 7" | 8 m      |
| Slewing Range   | 550 deg. | 550 deg. |
| End hose Length | 12' - 6" | 4 m      |

Specifications are subject to change without prior notice.



### Some of Southwest Concrete Pumping's Fleet:

