



SOUTHWEST CONCRETE PUMPING

Your Full-Service Pump Company



2323 West Oxford
Englewood, CO 80110

www.SouthwestCP.com

Metro Denver & Colorado Springs
Northern Colorado & Wyoming

TOLL FREE 888-781-7867

303-781-7867
970-330-1290

FAX 303-781-9446

KVM 32 Concrete Pump Truck Mounted Concrete Pump with 4-Section Placing Boom

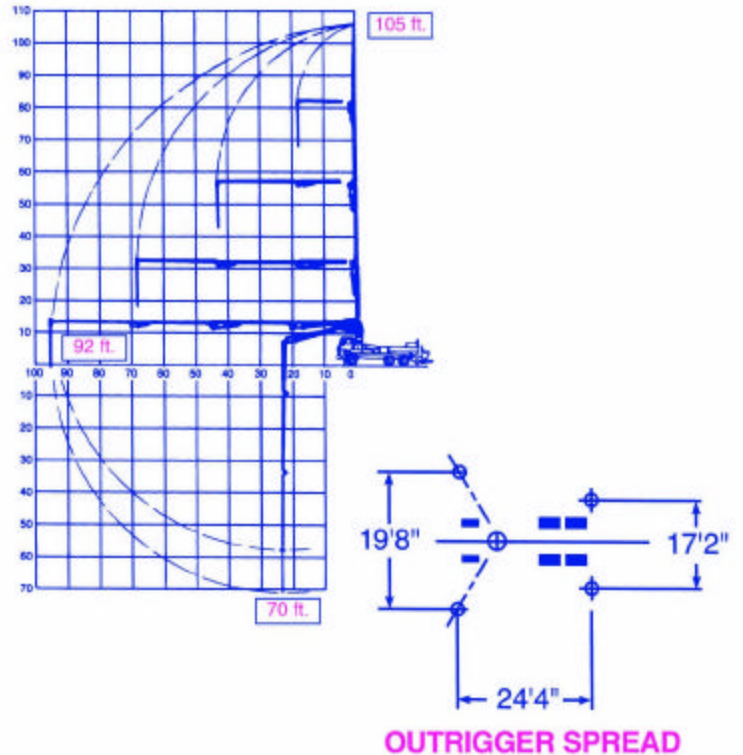
The KVM-32 is a compact, 4-section roll and fold boom design with a low unfolding height of 25'-4". The size of this model offers fast set-up and big performance.

Boom Specifications	U.S.	Metric
Pipeline Diameter	5"	125 mm
Vertical reach	106'	32 m
Reach From Slewing Axis	93'	28.3 m
Net Horizontal reach	84' - 4"	25.7 m
Unfolding Height	25' - 4"	7.5 m

Section Lengths:

First Section	25' - 11"	7.9 m
Second Section	23' - 1"	7 m
Third Section	23' - 1"	7 m
Fourth Section	20' - 10"	6.3 m
Slewing Range	400 deg.	400 deg.
End hose Length	12' - 6"	3.8 m

Specifications are subject to change without prior notice.



Some of Southwest Concrete Pumping's Fleet:

