



2323 West Oxford  
Englewood, CO 80110

www.SouthwestCP.com

Metro Denver & Colorado Springs  
Northern Colorado & Wyoming

TOLL FREE 888-781-7867

303-781-7867  
970-330-1290

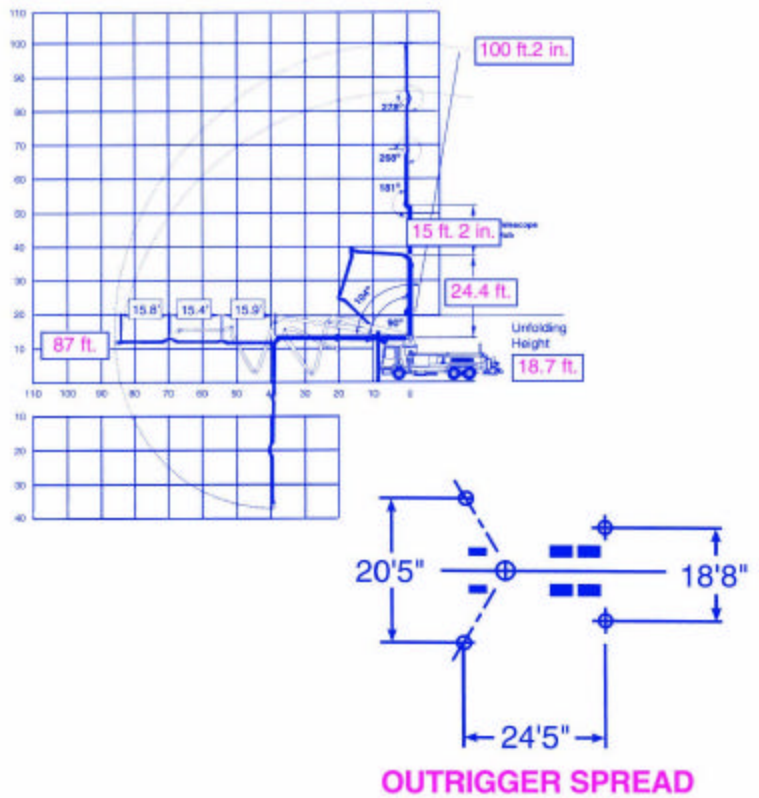
FAX 303-781-9446

## KVM 31 Truck Mounted Concrete Pump with Telescoping Boom

**Telescopic boom versatility** - This is a concrete pump that is two machines in one. In low overhead situations the boom needs only 18'-8" unfolding clearance to provide 87-feet of horizontal reach. The 15'-2" of smooth telescoping action allows the operator to keep the boom safely in the operational zone while providing pinpoint accuracy. It sets up quickly and uses pinpoint placement for smooth pumping on a wide variety of projects.

Boom Specifications	U.S.	Metric
Pipeline Diameter	5"	125 mm
Vertical reach	100'-2"	31 m
Reach From Slewing Axis	87'	27 m
Height of Folding Point (#1 hub)	12'-3"	32 m
Height of other 3 folding pts	#1 Retracted	#1 Extended
Pivot between #1 and #2	36' 9" 11.2 m	52' 15.8 m
Pivot between #2 and #3	52' 8" 16.0 m	67' 11" 20.7 m
Pivot between #3 and #4	68' 1" 20.7 m	83' 2" 25.3 m
Minimum Unfolding Height	18' - 8"	5.7 m
Slewing Range	545 deg.	545 deg.
End hose Length	12' 6"	3.8 m

*Specifications are subject to change without prior notice.*



**Southwest Concrete Pumping's KVM 31 Truck Mounted Concrete Pump with Telescoping Boom**  
With low unfolding height, the KVM 31 can pump where no other boom style can!

